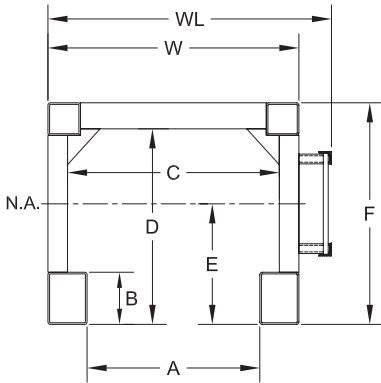




Building the World's Foundations

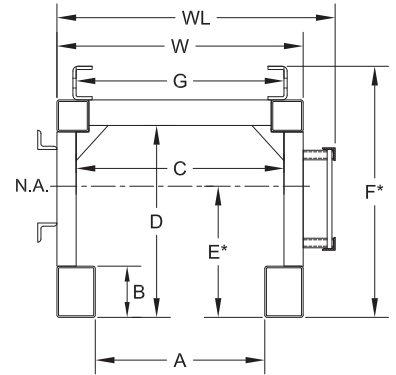
We manufacture, rent, sell and service deep foundation construction equipment.

Box and U Lead Specification Sheet



APE leads have the highest strength on the market. Please consult with APE engineers prior to using this equipment to assure that you have selected the proper size leads for your project.

Lead dimensions may vary from previous manufactured items. Consult factory and provide serial numbers to verify replacement parts.



Without Pin-up Rail

With Pin-up Rail / Auger Rail

Dimensions:	8 X 21	8 X 26	8 X 32	8 X 37	8 X 43	10 X 54
A	21.50	26.50	32.50	37.50	43.50	54.50
B	8.00	8.00	8.00	8.00	8.00	10.00
C	27.50	32.50	38.50	43.50	49.50	62.50
D	30.00	30.00	34.00	42.00	46.00	48.00
E	15.29	15.29	16.94	20.22	21.87	28.00
E*	22.10	22.10	24.50	29.29	31.69	N/A
F	34.00	34.00	38.00	46.00	50.00	54.00
F*	39.25	39.25	43.25	51.25	55.25	N/A
G	27.50	32.50	38.50	43.50	49.50	N/A
W	33.50	38.50	44.50	49.50	55.50	74.50
WL	38.50	43.50	49.50	54.50	60.50	79.50

Wt. (w/o PU-rail)	130 lb/ft	135 lb/ft	141 lb/ft	146 lb/ft	152 lb/ft	280 lb/ft
Wt. (with PU-rail)	165 lb/ft	170 lb/ft	176 lb/ft	181 lb/ft	187 lb/ft	315 lb/ft

Structural Properties (w/o Pinup Rail)

Mom. of Inertia (Ixx)	3978 in ⁴	3978 in ⁴	5174 in ⁴	8052 in ⁴	9737 in ⁴	23,207 in ⁴
Min. Sec. Mod. (Sxx)	212.7 in ³	212.7 in ³	245.6 in ³	312.4 in ³	346.0 in ³	753.6 in ³

Structural Properties (with Pinup Rail)

Mom. of Inertia (Ixx)	7020 in ⁴	7020 in ⁴	8925 in ⁴	13,445 in ⁴	16,060 in ⁴	30,597 in ⁴
Min. Sec. Mod. (Sxx)	317.6 in ³	317.6 in ³	364.3 in ³	459.0 in ³	506.9 in ³	1,020 in ³

Material Properties:

Steel Tubing	ASTM A500, Grade B
Tensile Strength	58,000 psi = 40,000 N/m ²
Yield Strength	46,000 psi = 31,700 N/m ²